



## **PSC-ETH**      **Application Note : A491\_2**

### **Decimal point**

#### **Introduction:**

PSC-ETH related programs based on LabVIEW need to work with the decimal point character (“.”). When a program is made using fill in boxes for voltage or current settings and the fill in box visualizes a comma character (“,”). Then the operating system is configured with a comma as decimal separator.

#### **Recognizing the problem:**

The PSC-ETH will give the error “-220, Parameter error” when parameters are send using commas as decimal separator. For example “SOURCE:VOLTAGE 2,5” instead of “SOURCE:VOLTAGE 2.5”. Use the command “SYSTEM:ERROR?” to read the error.

#### **Workaround methods:**

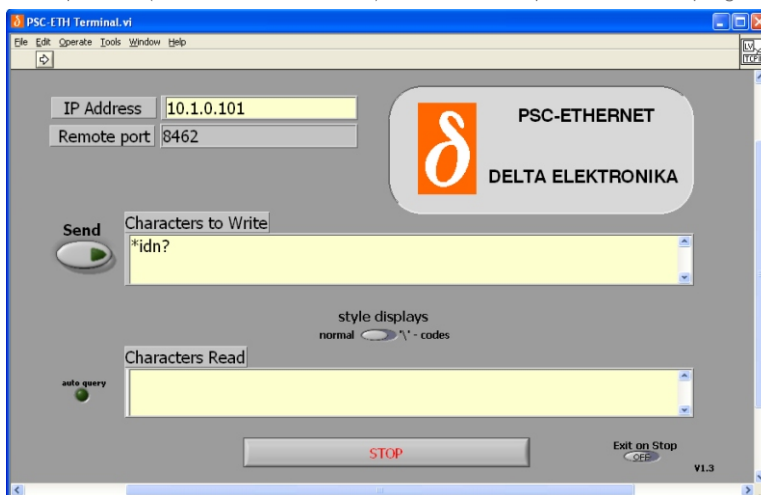
There are two workarounds for this separator issue:

1. The decimal separator can be set to a point character in the operating system region option settings
2. The decimal separator can be set to a point character in LabVIEW. This does only affect the separator setting within LabVIEW

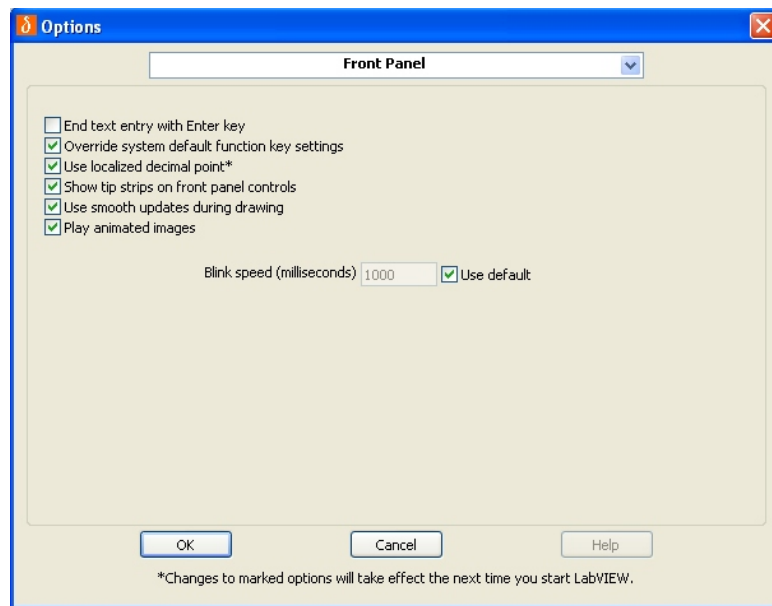
#### **Workaround within LabVIEW:**

Take the following steps to set the decimal separator within LabVIEW to the point character.

1. Start the installed NI LabVIEW development software or start a LabVIEW based program like the PSC-ETH Terminal. The Terminal program can be found on the PSC-ETH Driver CD-ROM and on the website: <http://www.deltapowersupplies.com>
2. When the LabVIEW system is loaded click on Tools > Options.  
Notice. First set ‘Exit on Stop’ to Off (in Terminal V1.3, or later) and click on Stop in the Terminal program



3. Select the Front Panel tab within Options
4. Select “Use localized decimal point”



Click on OK to save the setting and restart LabVIEW

5. Notice. When the region settings are changed after the "Use localized decimal point" setting has been made, then the decimal separator has to be set to the point character in the region settings.

LabVIEW is a registered trademark of National Instruments.